

NORTHWESTERN

MS

TRUMPET

WARM-UP PACKET

2018-19

BREATHING GYM

Warm-Up

- Field goal arms, twisting and turning inhaling and exhaling on your own terms
- Shake it off

5 in, 15 sip, half and half, ssss!!!

- Inhale in a pattern for 5 beats
 - Quarter, eighths, triplets, sixteenths,
 - Inhale sip for 15
- Exhale release, Capture the air and pause and release again
- Finish the rest of your air with a “sssssss”
- Breath in 1, Sigh out 1

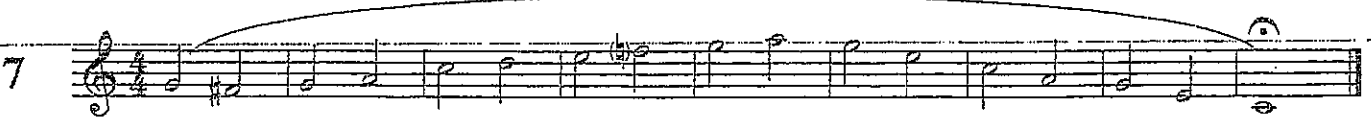
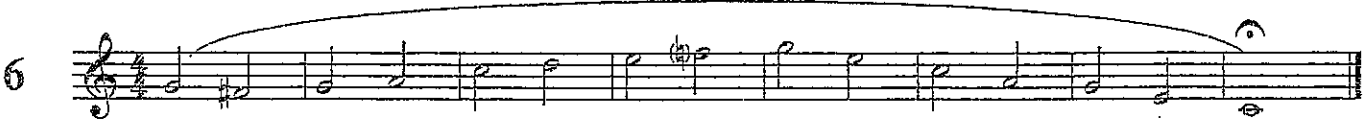
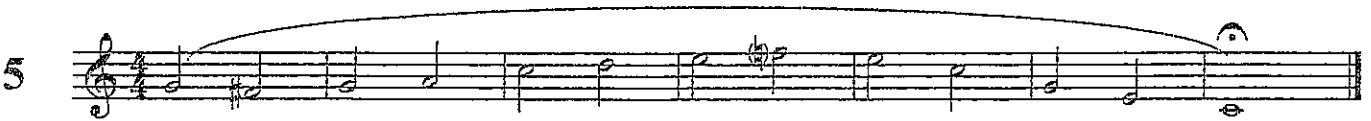
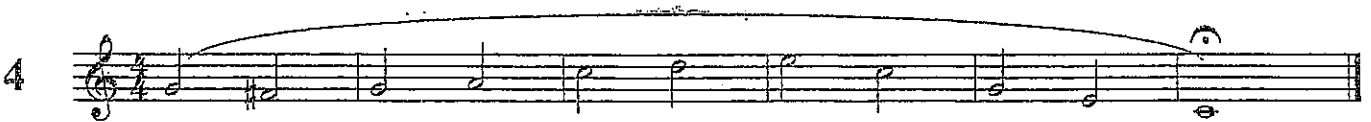
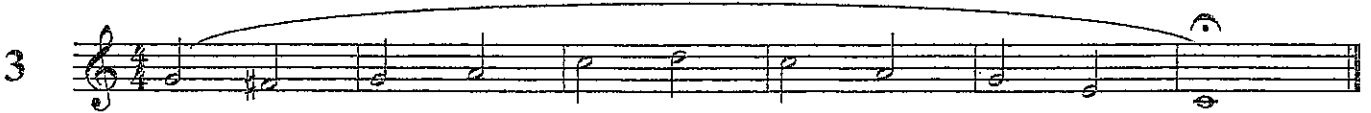
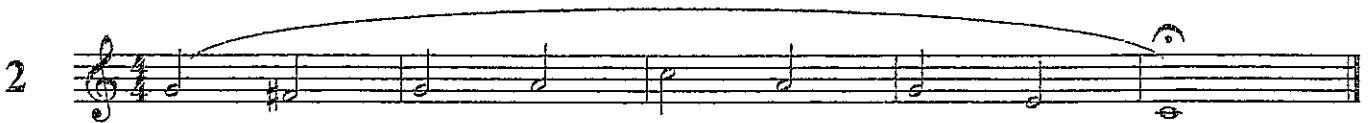
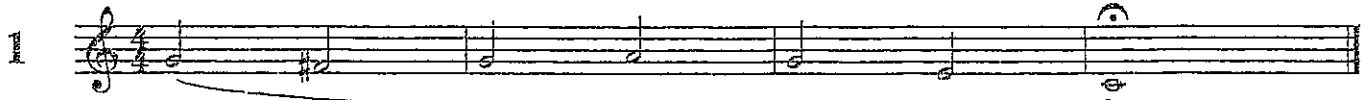
Inhalation and exhalation

- Inhale for 4 counts with your hand over mouth long ways
- Exhale straight ahead with your palm in front of your face for 4 counts.
- Continue using these patterns

- In for 4, out for 4
- In for 3, out for 4
- In for 2, out for 4
- In for 1, out for 4
- In for 1, out for 5
- In for 1, out for 6
- In for 1, out for 7
- In for 1, out for 8
- In for 1, out for 9
- In for 1, out for 10
- Breath in for 1, sigh for 1

B \flat Trumpet

FLOW STUDIES



Clarinet / Trumpet Lip Slur Exercises

35

1

0 — 2 — 1 — 12 — 23

2

0 — 2

1 — 12

23

3

2 — 1 — 12 — 23

13 — 123 — 0

Tuning Chords

4

E_b
(T 12 SK) cl

23 - Trpt

D_b
(T 123 P (Left)) cl

123 - Trpt

Trumpet

Scales

Shawn Gee

$\text{♩} = 100$

Concert Bb Scale

Bb Arpeggios

Musical notation for the Concert Bb Scale and Bb Arpeggios. The scale is written in a single staff with a treble clef and a key signature of two flats (Bb). The arpeggios are written in a single staff with a treble clef and a key signature of two flats (Bb).

Bb Thirds

Musical notation for Bb Thirds. The exercise is written in a single staff with a treble clef and a key signature of two flats (Bb).

Concert F Scale

F Arpeggio

Musical notation for the Concert F Scale and F Arpeggio. The scale is written in a single staff with a treble clef and a key signature of one sharp (F#). The arpeggio is written in a single staff with a treble clef and a key signature of one sharp (F#).

F Thirds

Musical notation for F Thirds. The exercise is written in a single staff with a treble clef and a key signature of one sharp (F#).

Concert Eb Scale

Musical notation for the Concert Eb Scale. The scale is written in a single staff with a treble clef and a key signature of three flats (Eb).

Eb Thirds

Musical notation for Eb Thirds. The exercise is written in a single staff with a treble clef and a key signature of three flats (Eb).

Concert Ab Scale

Musical notation for the Concert Ab Scale. The scale is written in a single staff with a treble clef and a key signature of four flats (Ab).

Ab Thirds

Musical notation for Ab Thirds. The exercise is written in a single staff with a treble clef and a key signature of four flats (Ab).

Concert C Scale

Musical notation for the Concert C Scale. The scale is written in a single staff with a treble clef and a key signature of one sharp (C#).

C Thirds

Musical notation for C Thirds. The exercise is written in a single staff with a treble clef and a key signature of one sharp (C#).

Chromatic Scale #1



Chromatic Scale #2



Chromatic #3



8



Tonguing Exercises

Trumpet/Clarinet

EDHS 2012

①



②



③



④



⑤



⑥



⑦



⑧



